

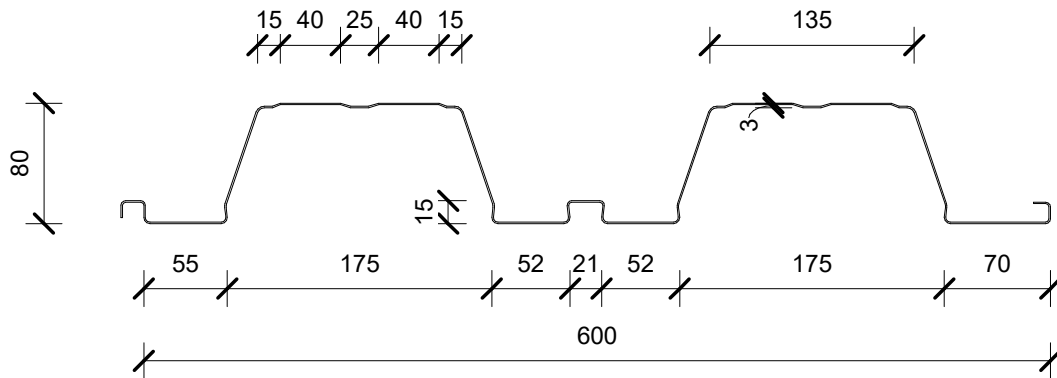
**SVELTE 80 WITH CONCRETE TOPPING**

**BASE METAL THICKNESS:**

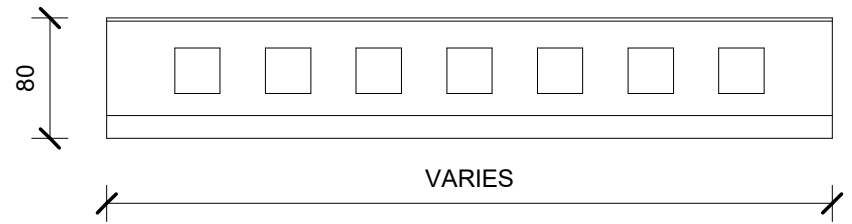
- 0.75mm (G550 STEEL GRADE)
- 0.95mm (G550 STEEL GRADE)
- 1.15mm (G550 STEEL GRADE)

**COATING:**

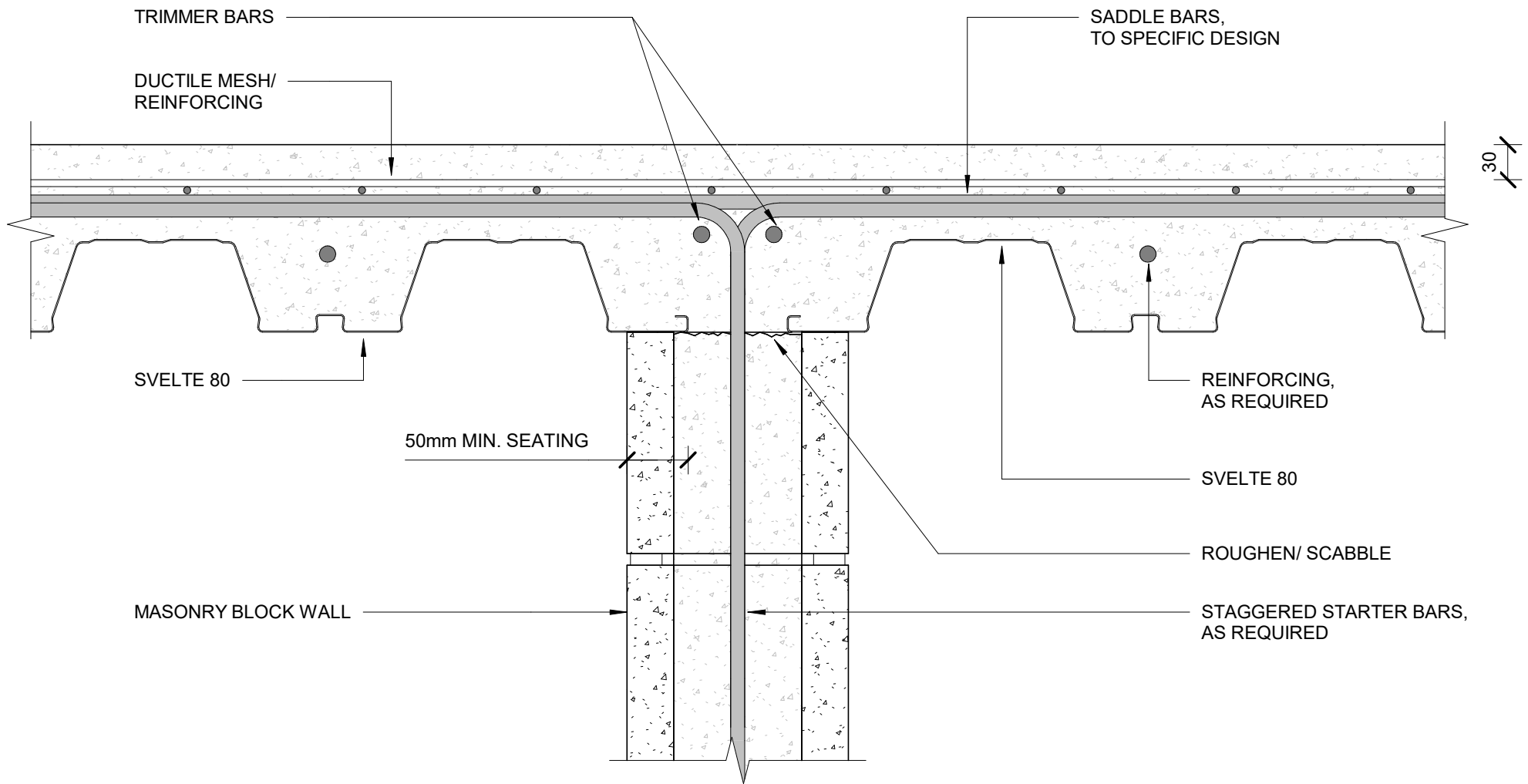
- Z275 GALVANIZED COATING



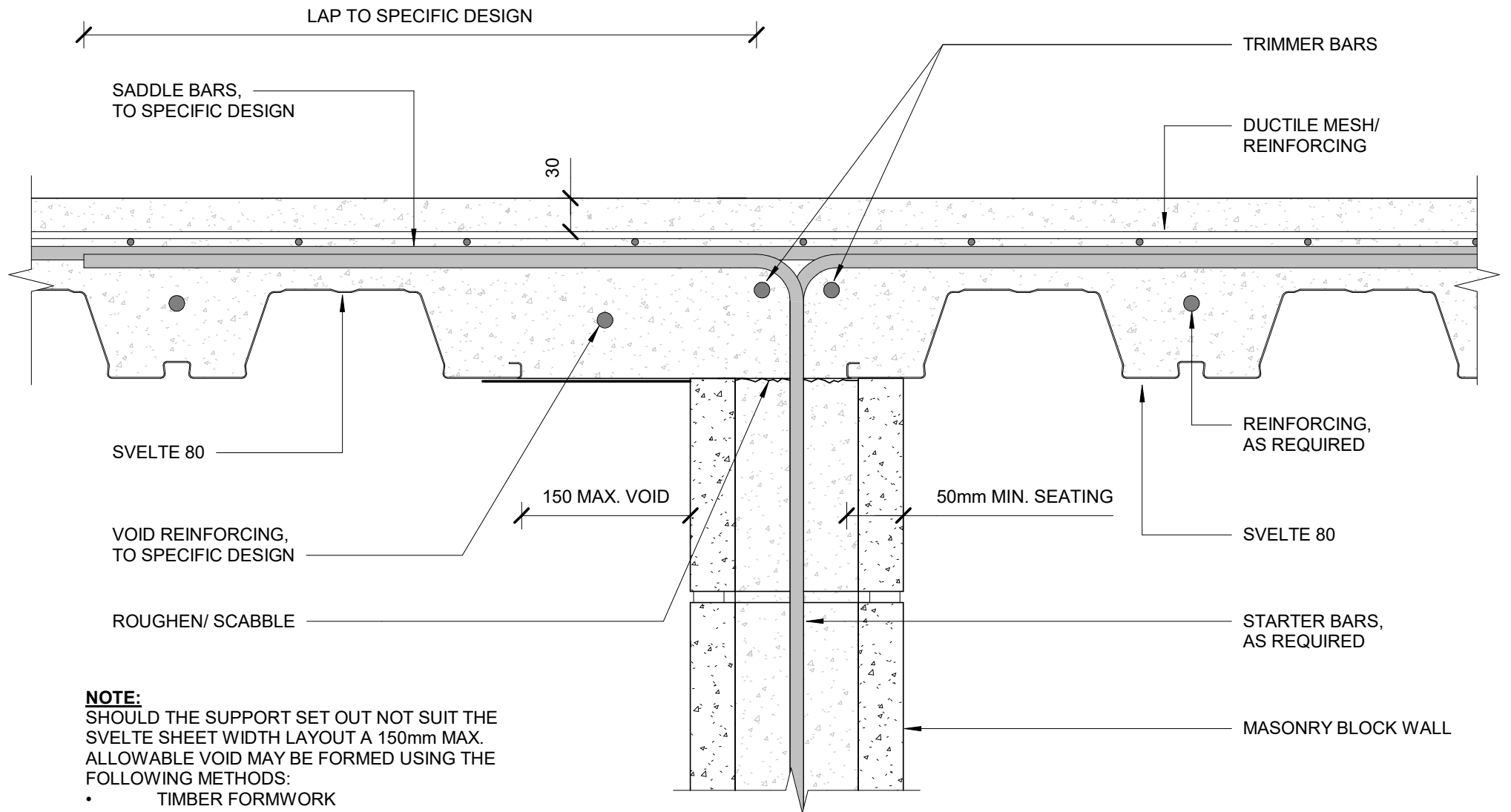
**SVELTE 80 PROFILE**



**SVELTE 80 ELEVATION**



**BLOCK INTERNAL SUPPORT PARALLEL TO TRAY SPAN**

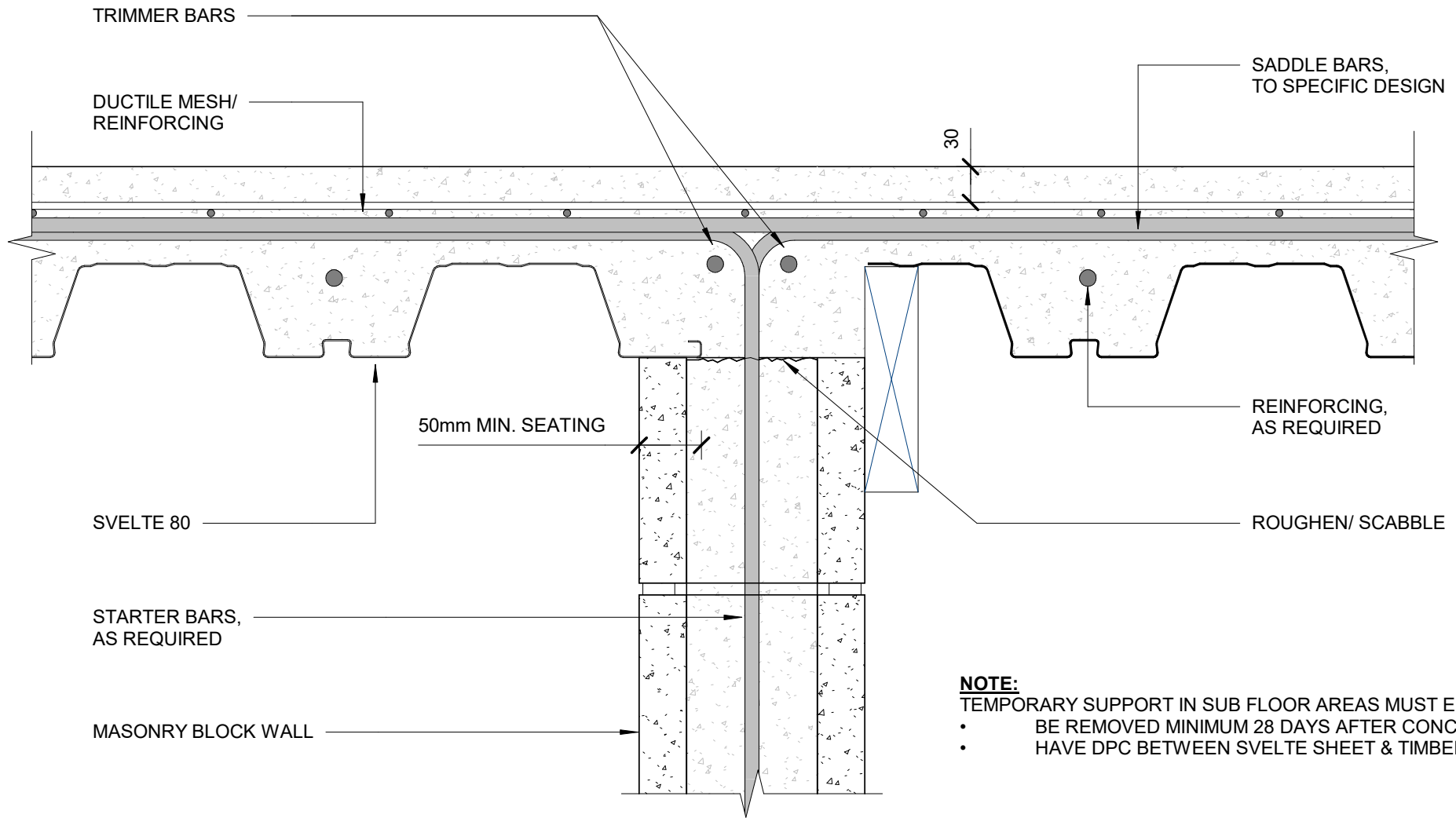


**NOTE:**

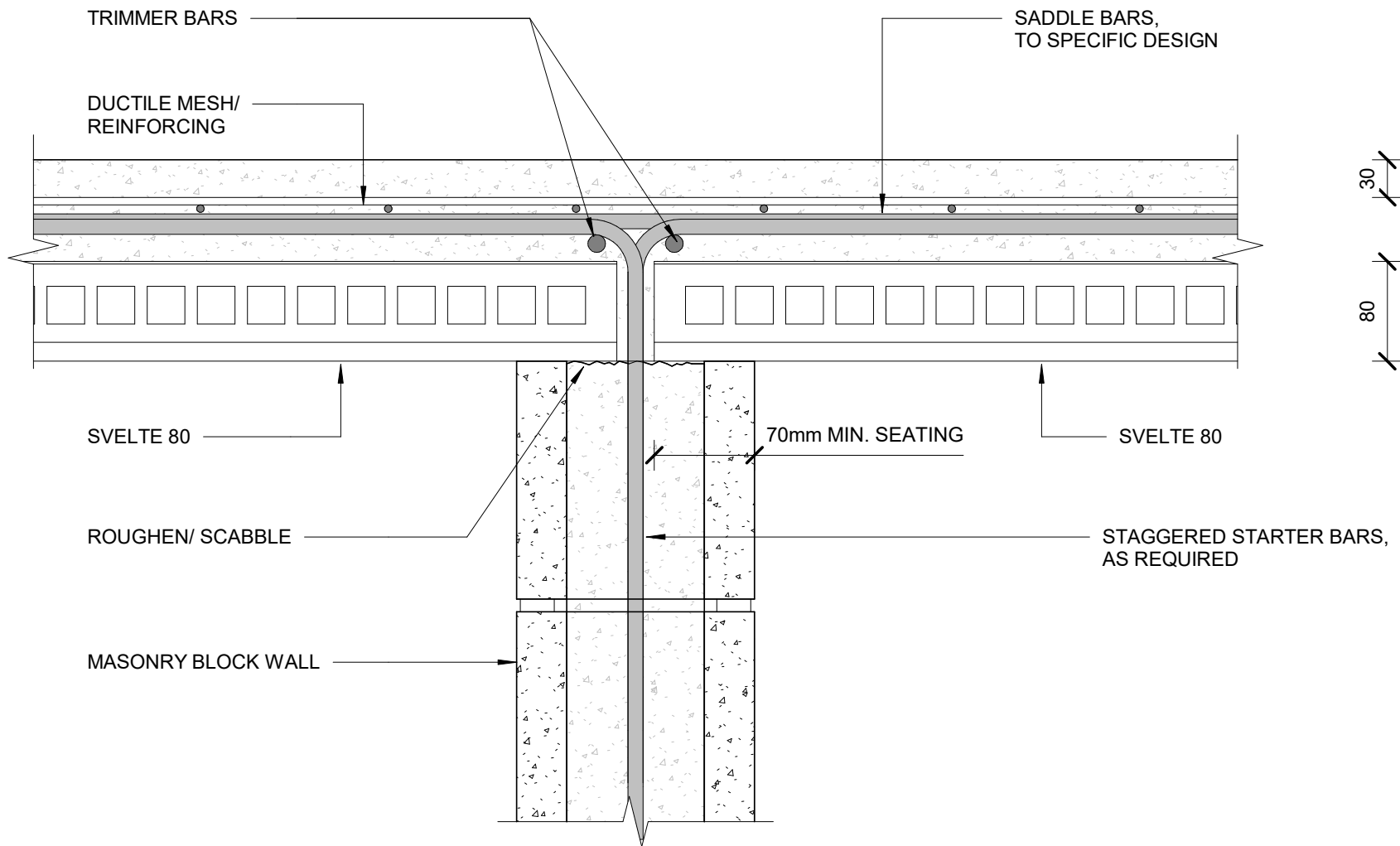
SHOULD THE SUPPORT SET OUT NOT SUIT THE SVELTE SHEET WIDTH LAYOUT A 150mm MAX. ALLOWABLE VOID MAY BE FORMED USING THE FOLLOWING METHODS:

- TIMBER FORMWORK
- SHEET METAL FLASHING FIXED TO SVELTE SHEET USING TEK SCREWS @ 300 CRS & BLOCK WALL WITH MASONRY NAILS & WASHERS @ 300 CRS.

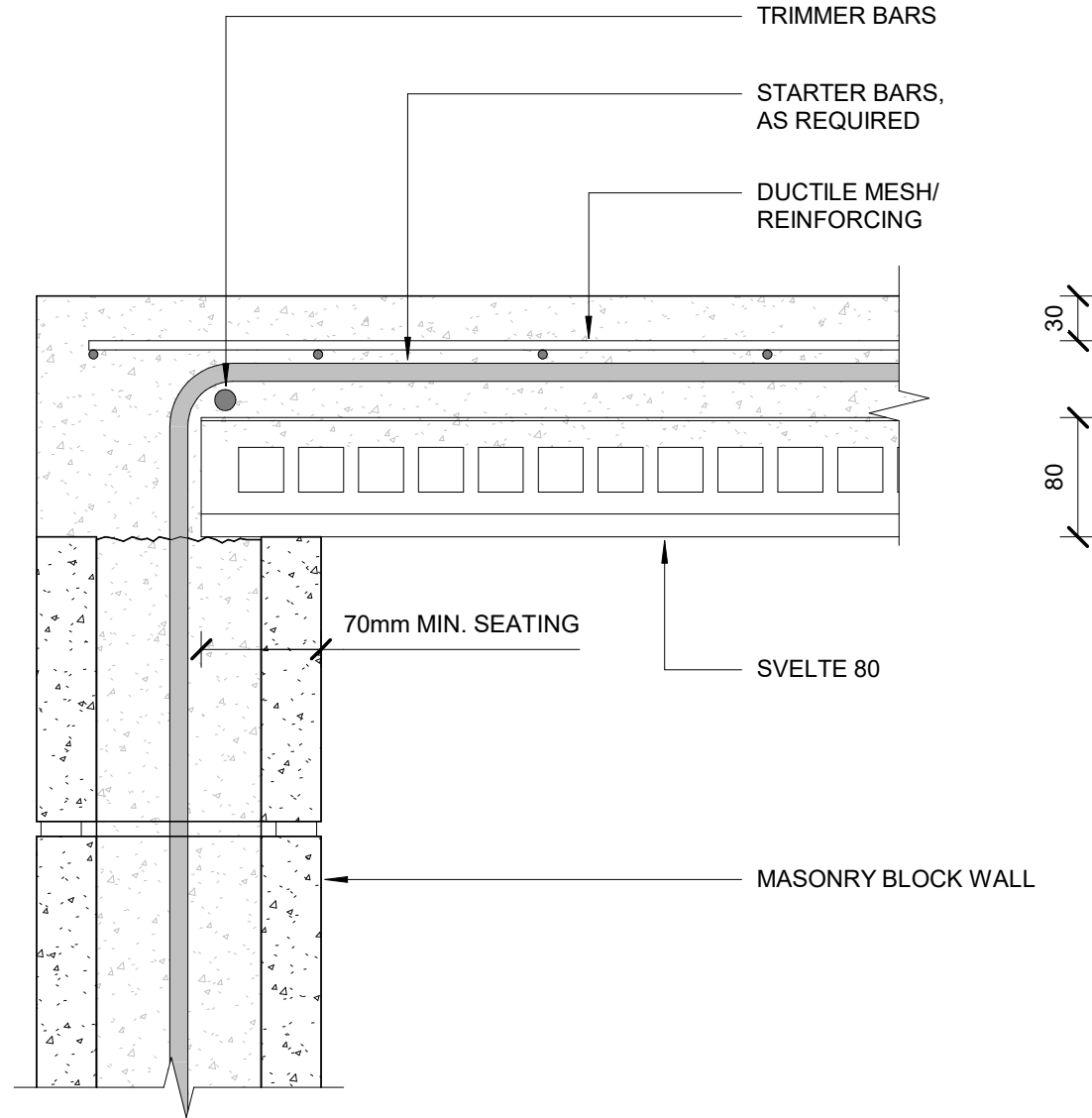
**BLOCK INTERNAL SUPPORT PARALLEL TO TRAY SPAN**



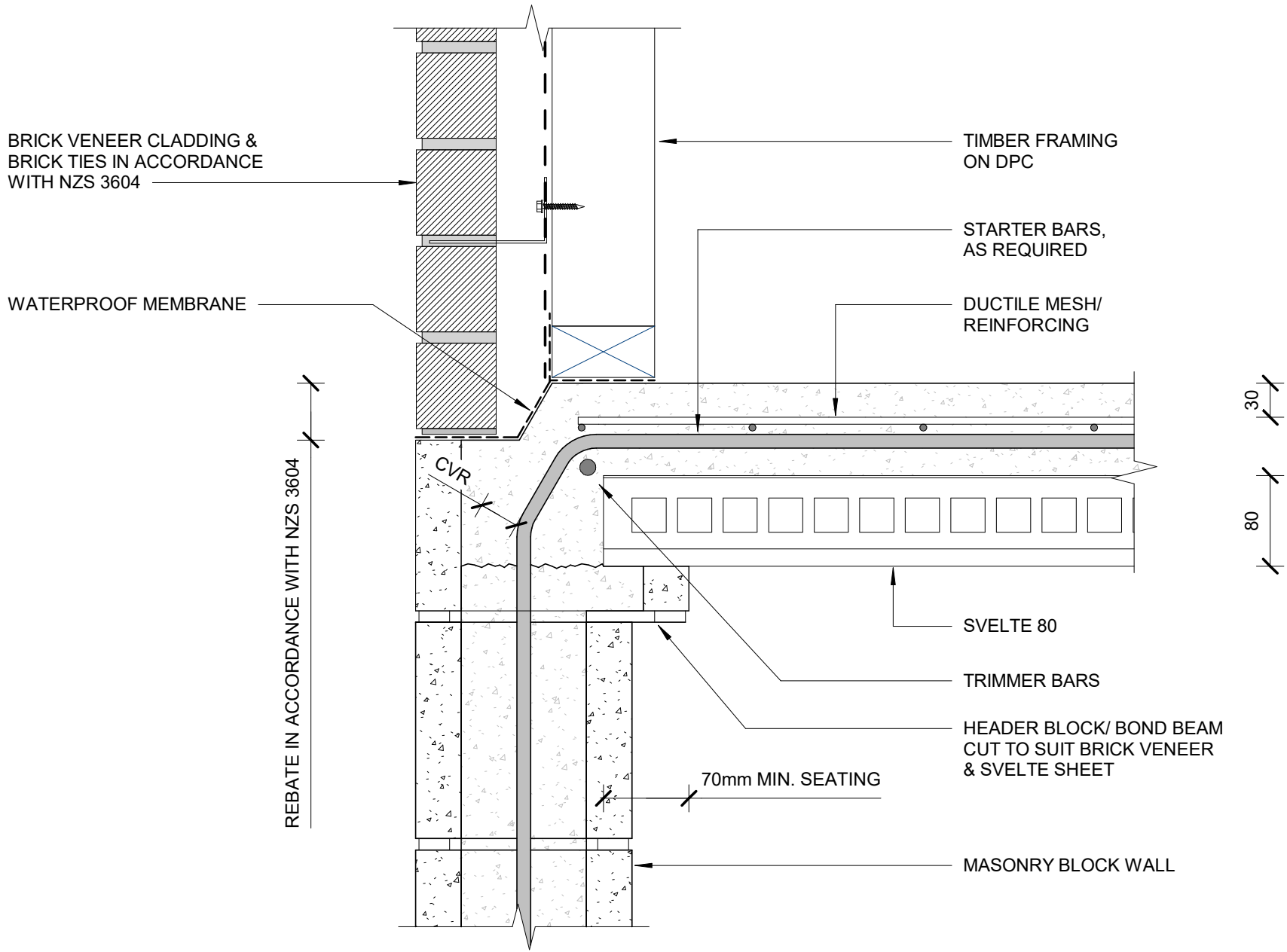
**BLOCK INTERNAL SUPPORT PARALLEL TO TRAY SPAN (OPTION 2)**



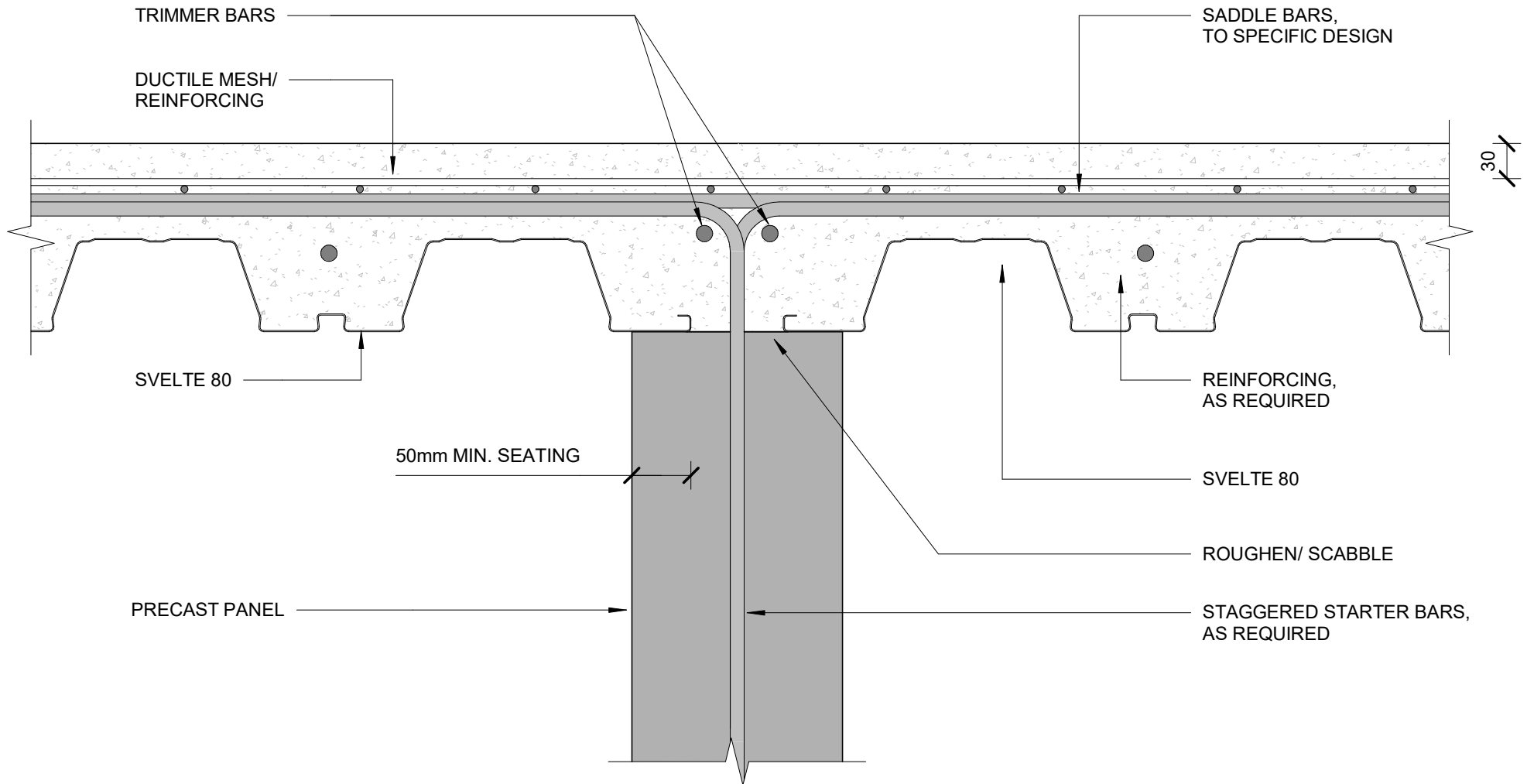
**BLOCK INTERNAL SUPPORT PERPENDICULAR TO TRAY SPAN**



BLOCK SUPPORT PERPENDICULAR TO TRAY SPAN

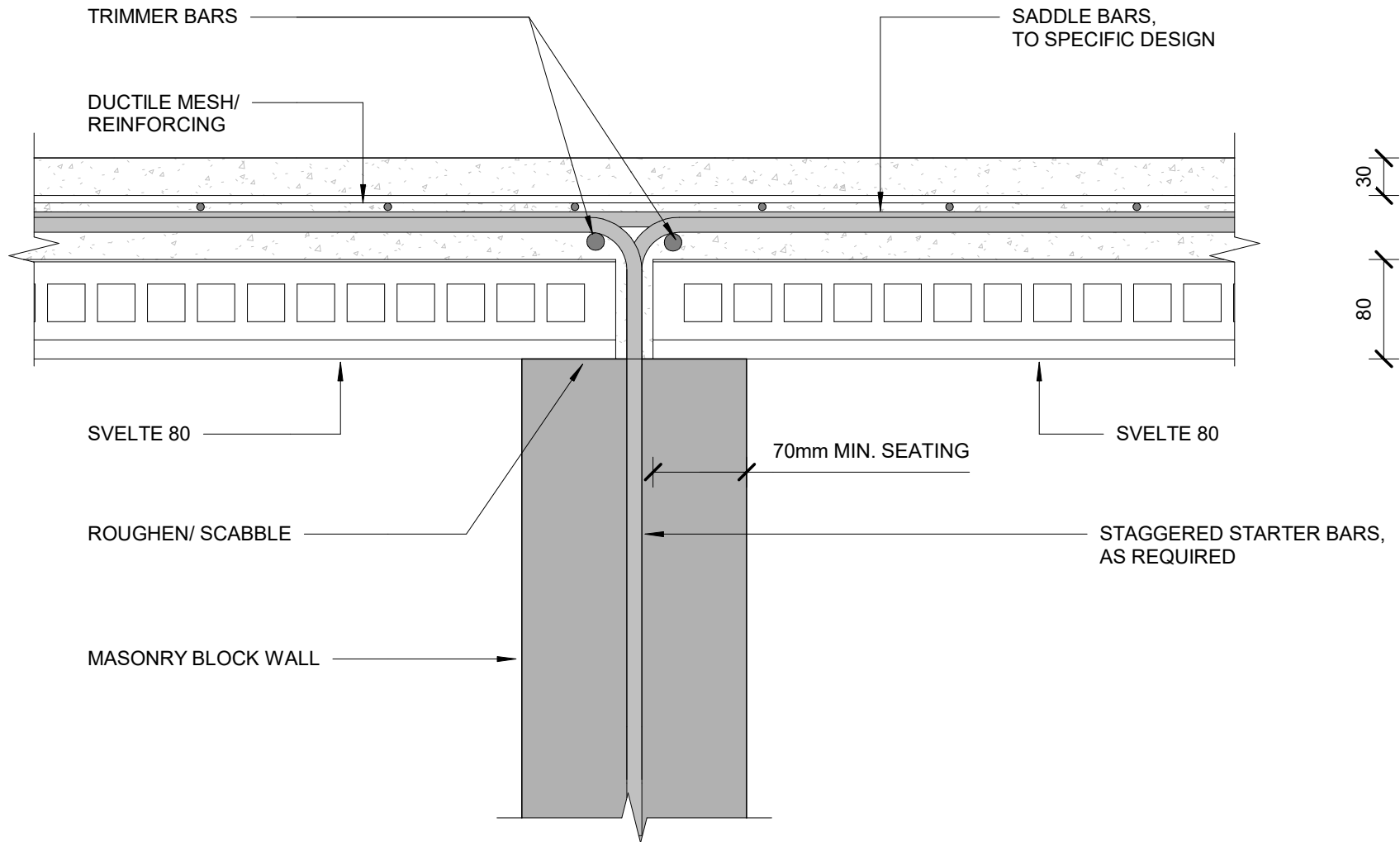


**BLOCK SUPPORT PERPENDICULAR TO TRAY SPAN (BRICK VENEER)**

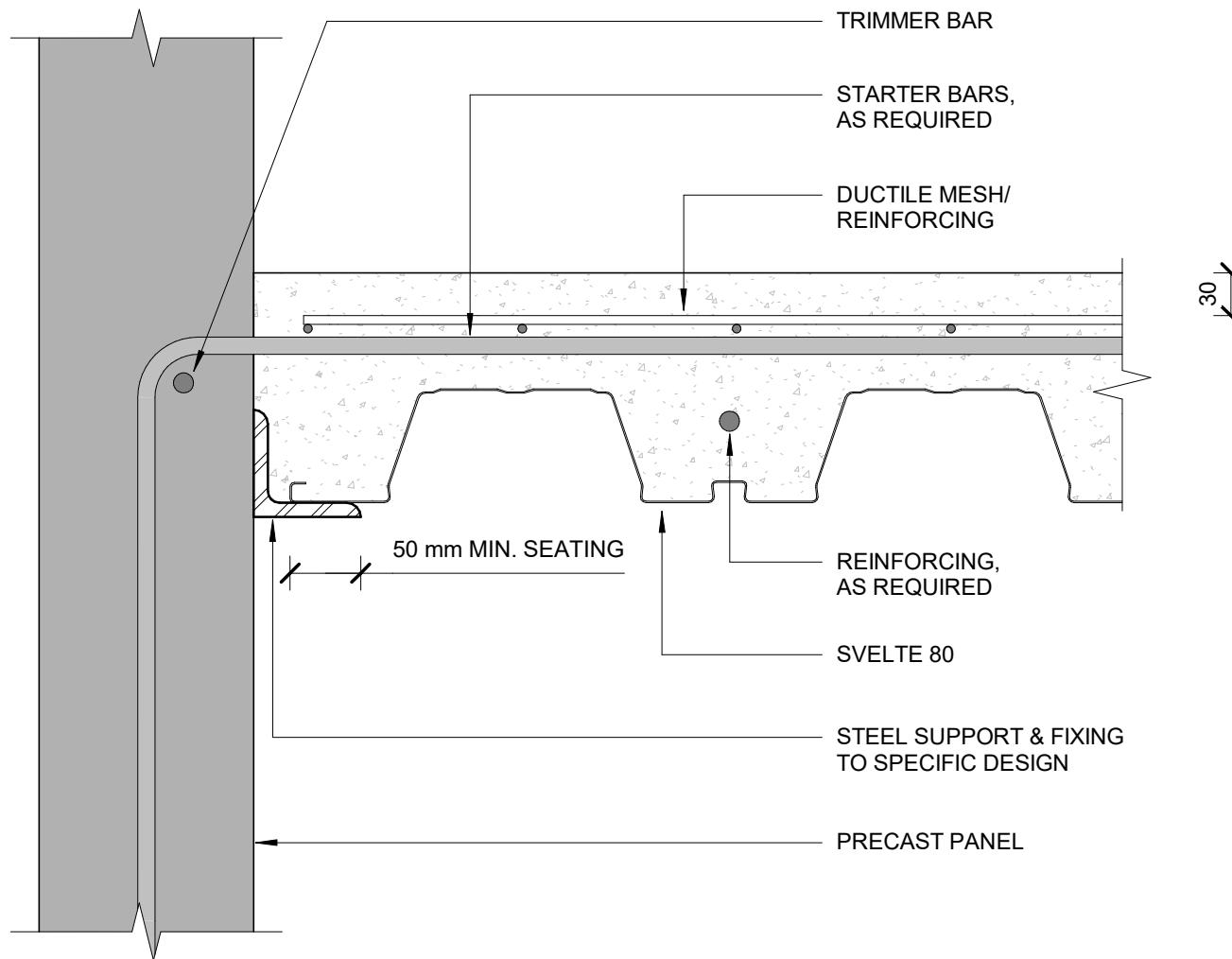


**PRECAST PANEL INTERNAL SUPPORT PARALLEL TO TRAY SPAN**

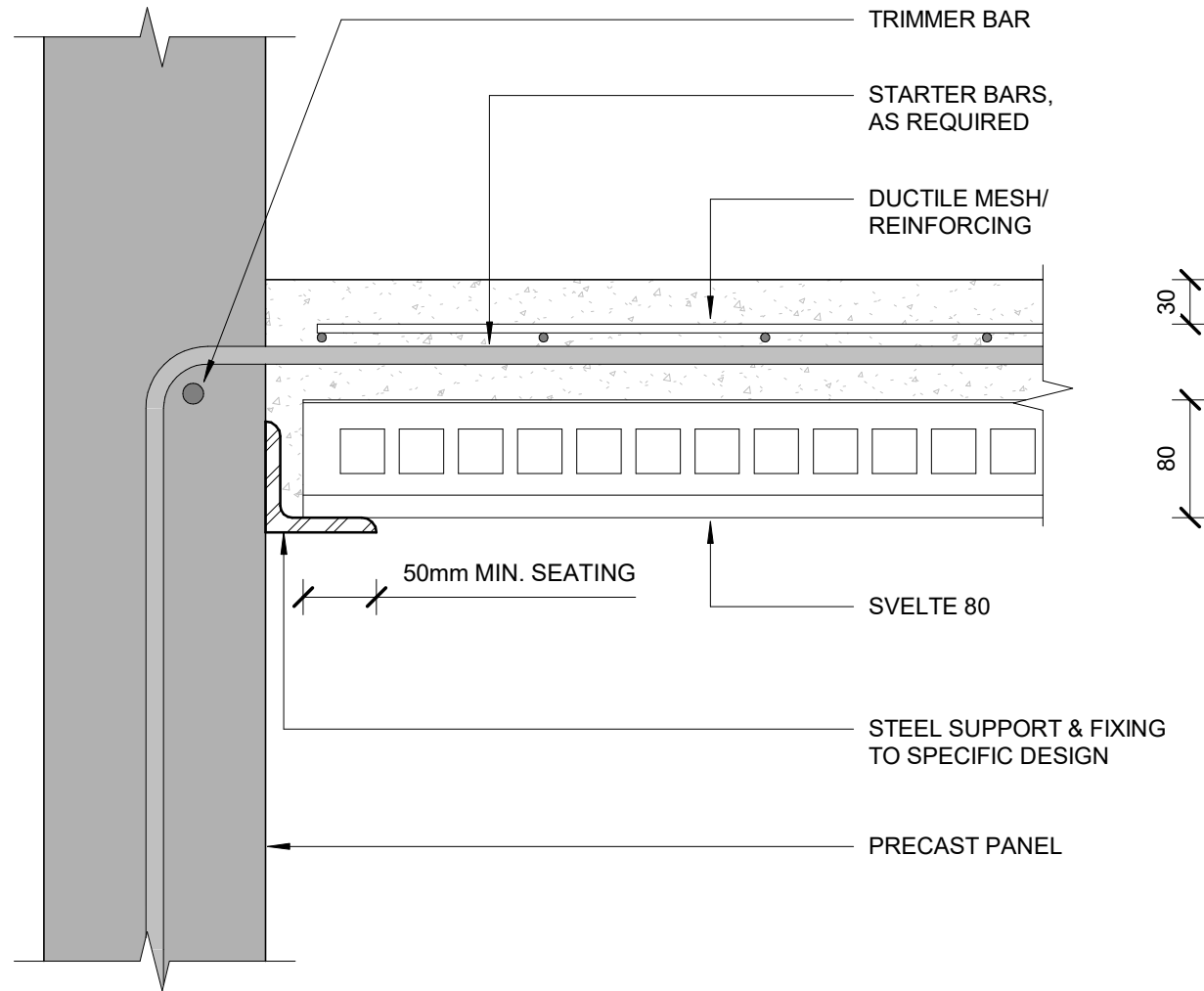




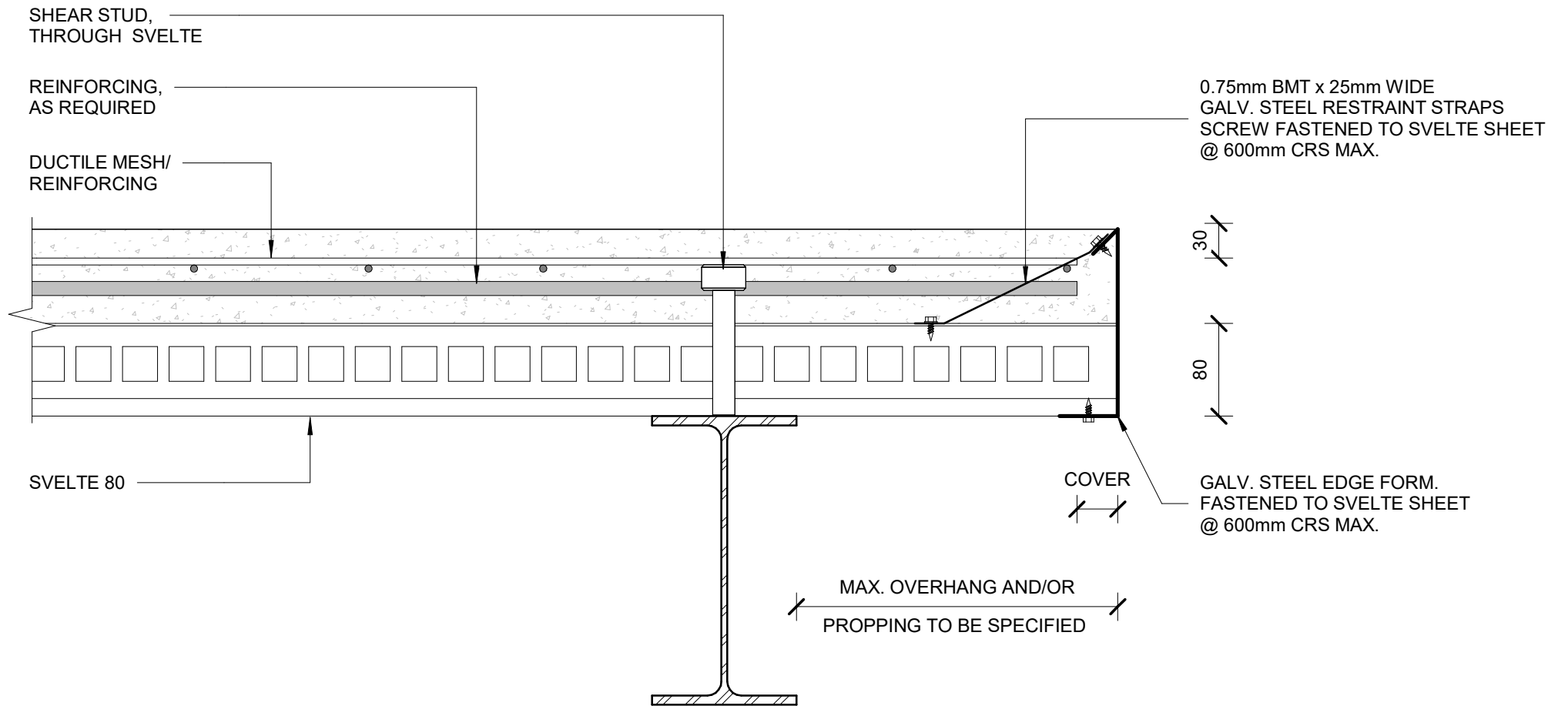
PRECAST PANEL INTERNAL SUPPORT PERPENDICULAR TO TRAY SPAN

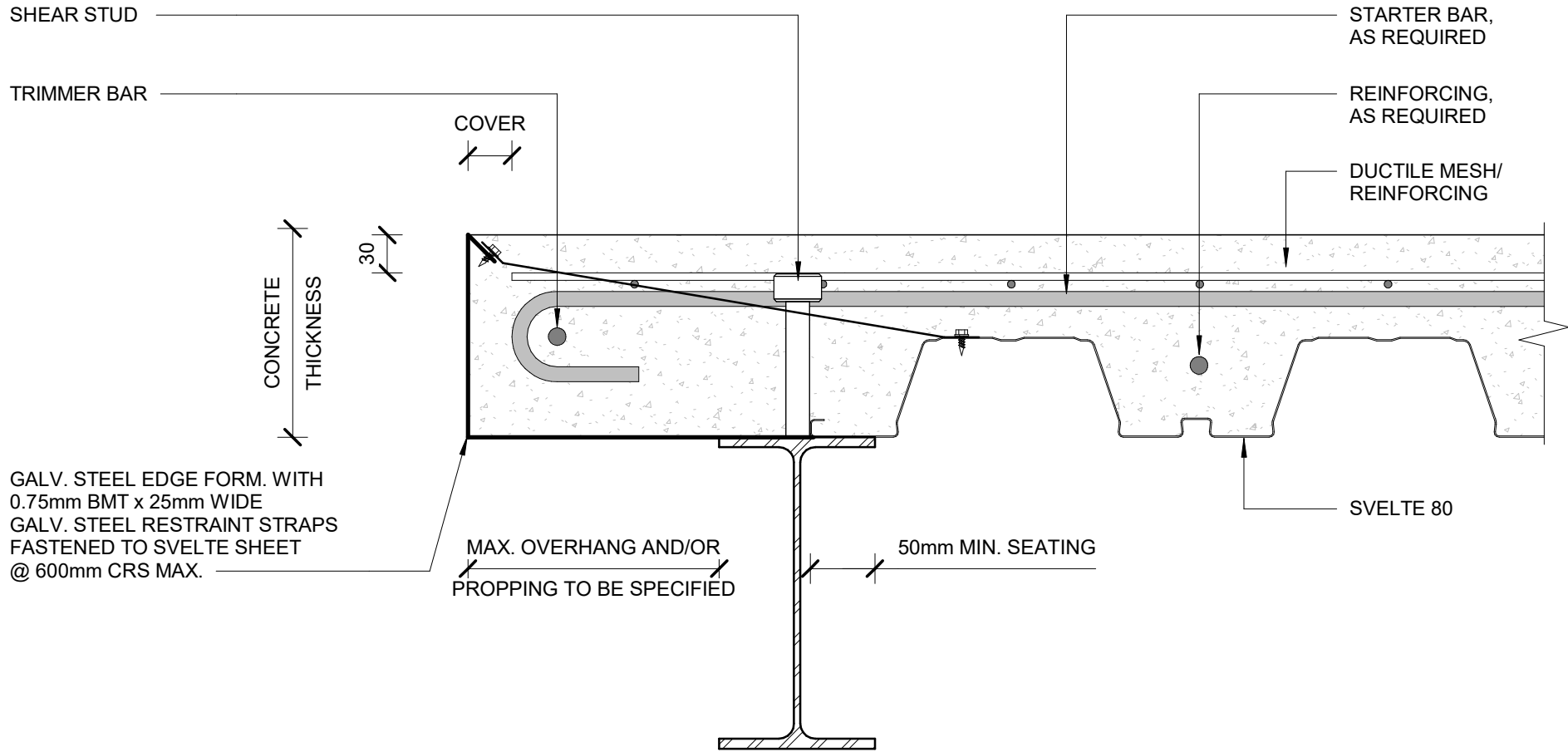


PRECAST PANEL SUPPORT PARALLEL TO TRAY SPAN

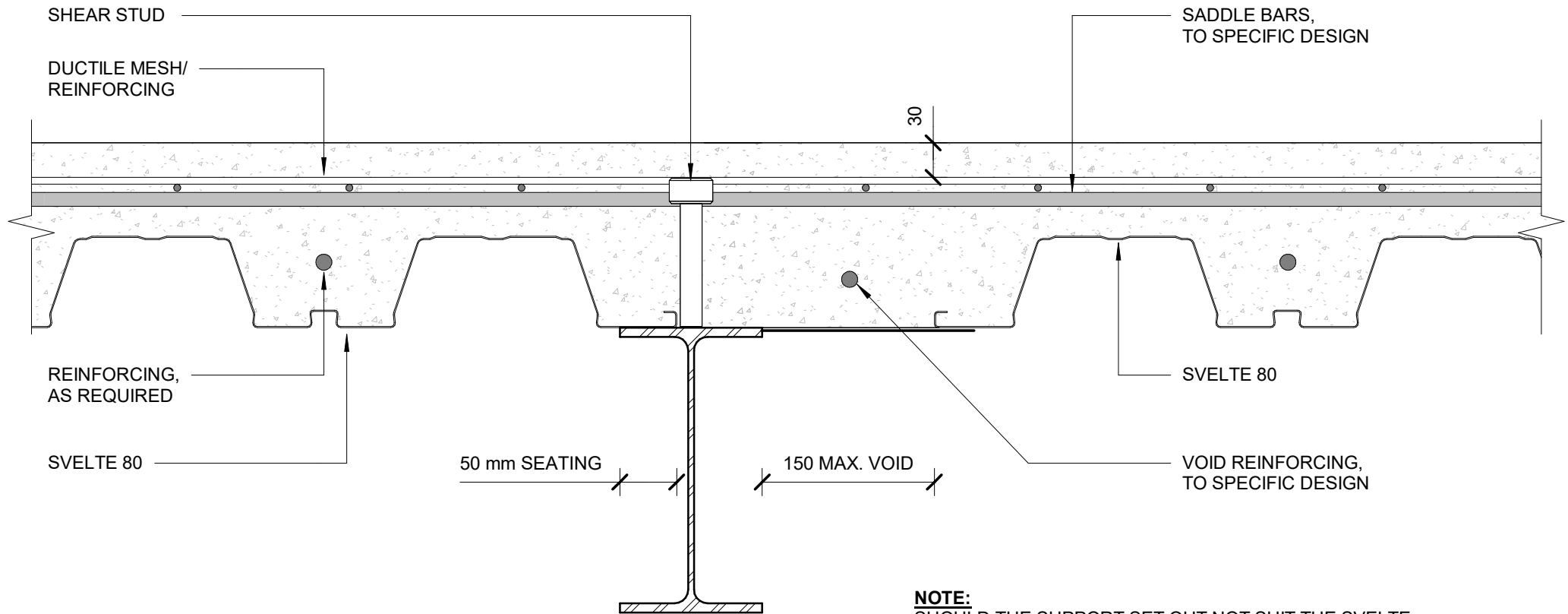


**PRECAST PANEL SUPPORT PERPENDICULAR TO TRAY SPAN**



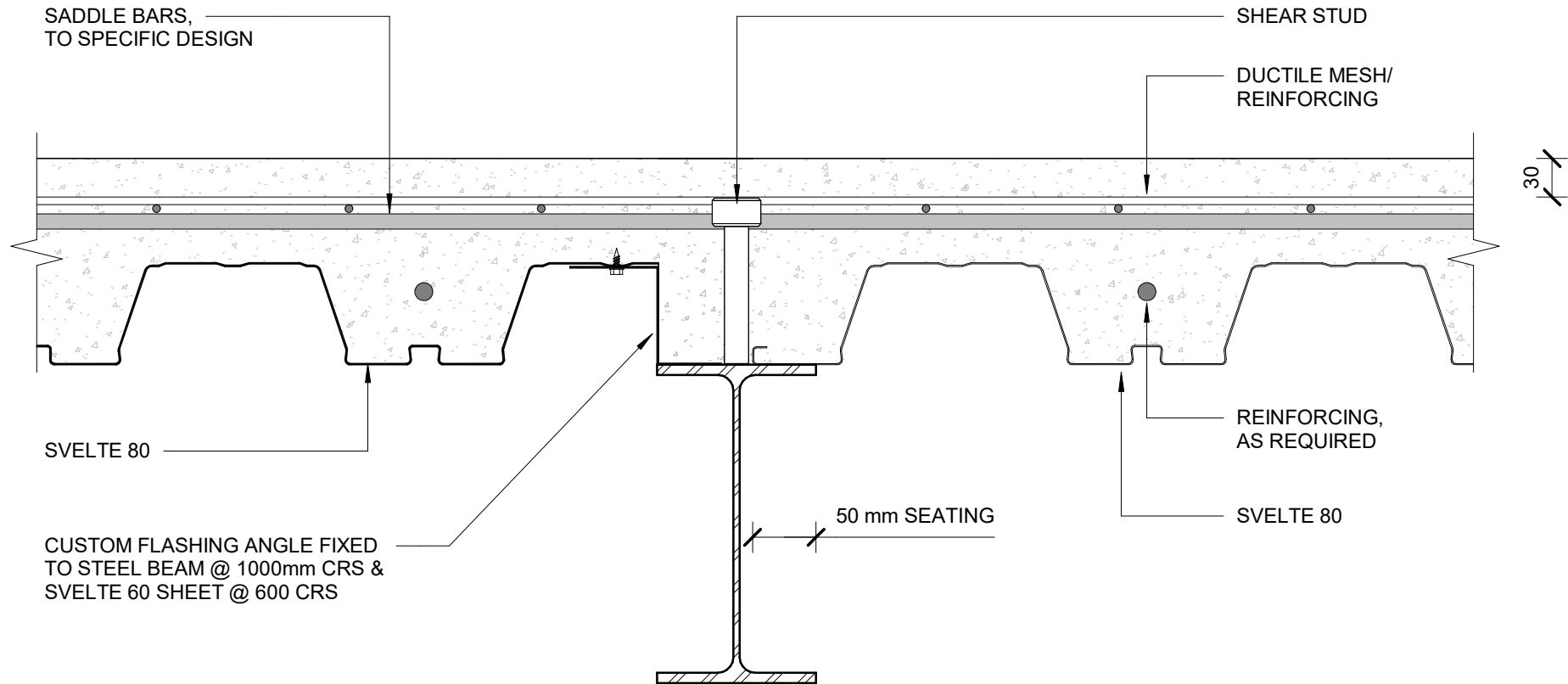


EDGE STEEL BEAM SUPPORT PARALLEL TO TRAY SPAN

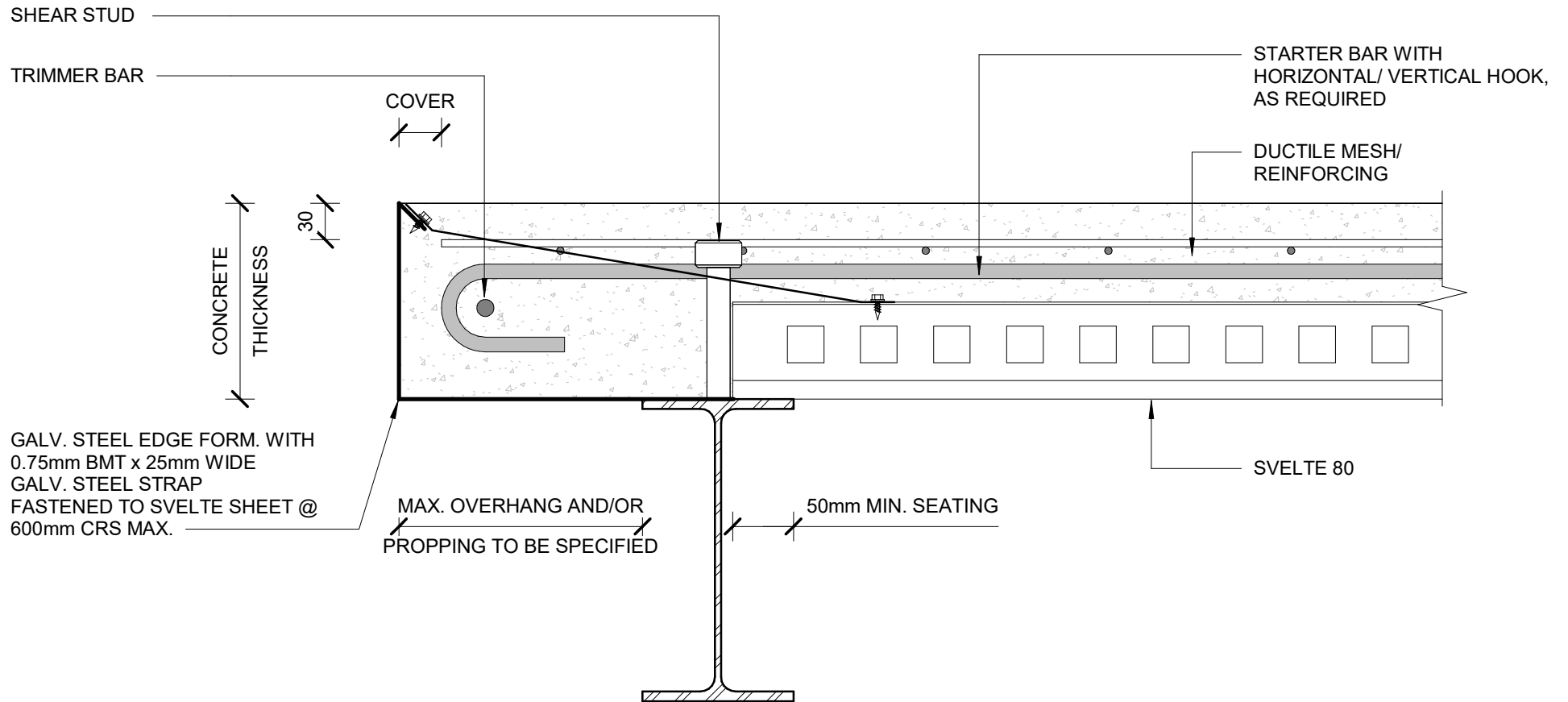


**NOTE:**  
 SHOULD THE SUPPORT SET OUT NOT SUIT THE SVELTE SHEET WIDTH LAYOUT A 150mm MAX. ALLOWABLE VOID MAY BE FORMED USING THE FOLLOWING METHODS:

- TIMBER FORMWORK
- SHEET METAL FLASHING FIXED TO SVELTE SHEET & STEEL USING TEK SCREWS @ 300 CRS

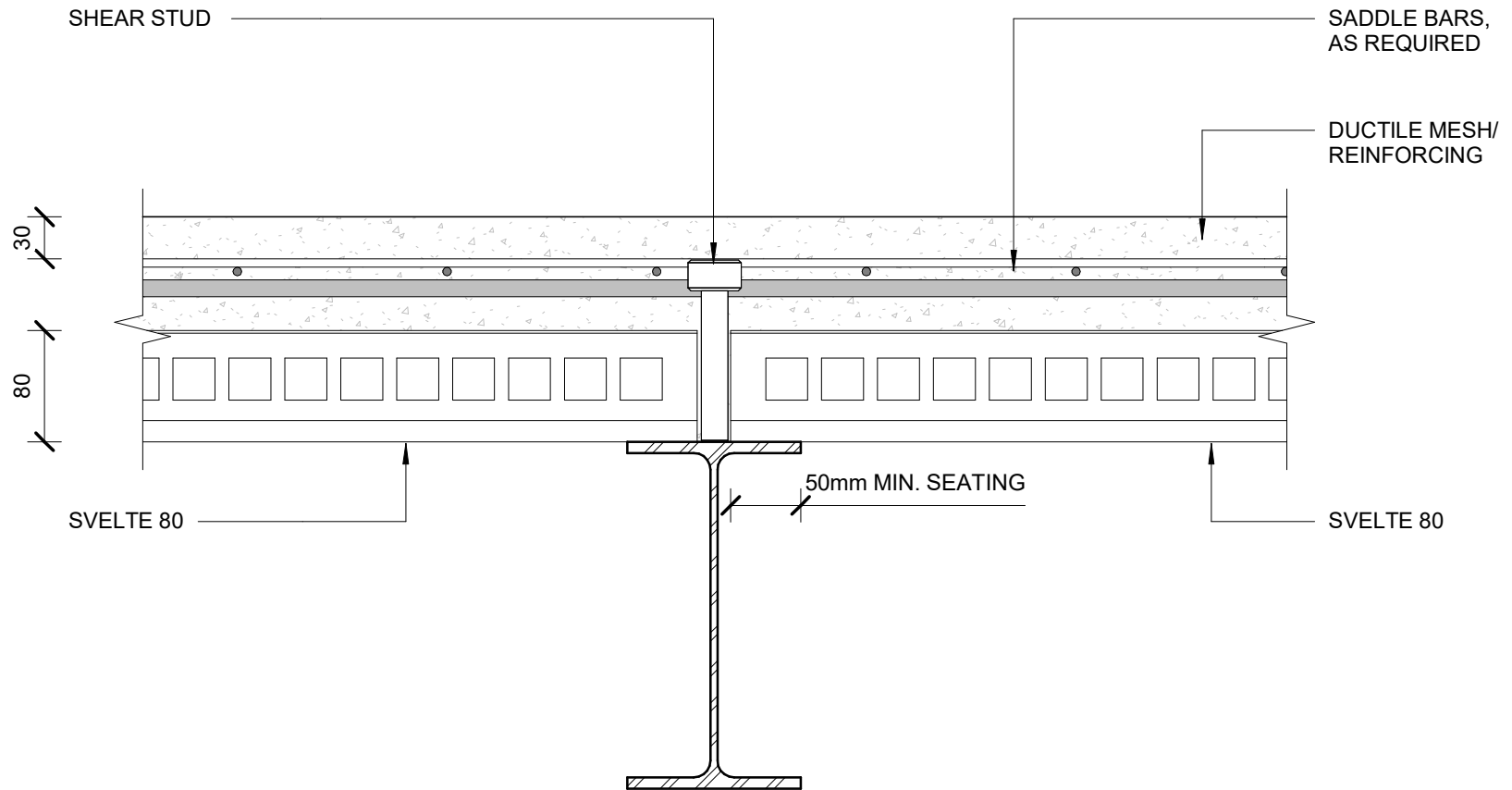


EDGE STEEL BEAM SUPPORT PARALLEL TO TRAY SPAN

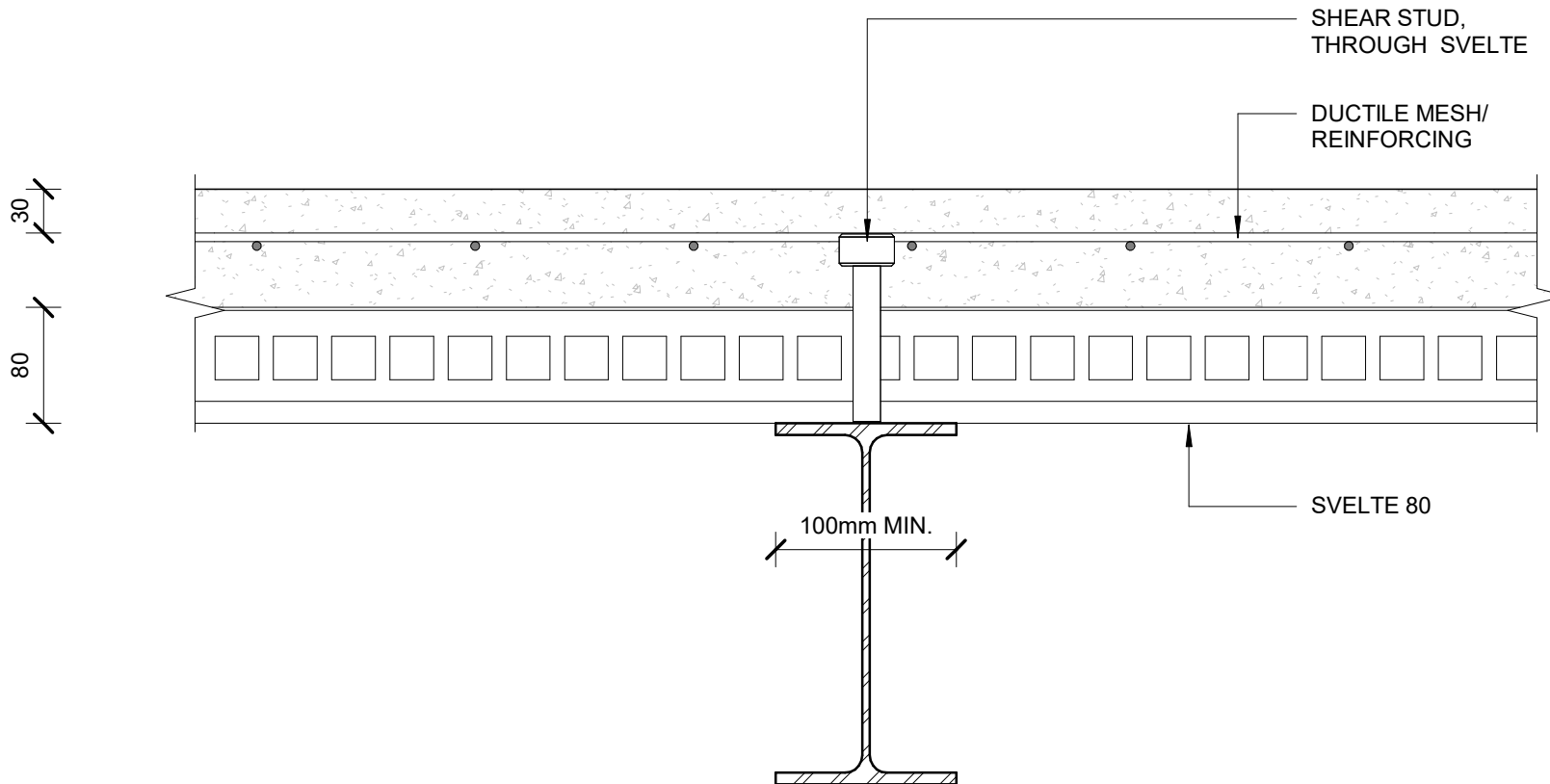


EDGE STEEL BEAM SUPPORT PERPENDICULAR TO TRAY SPAN

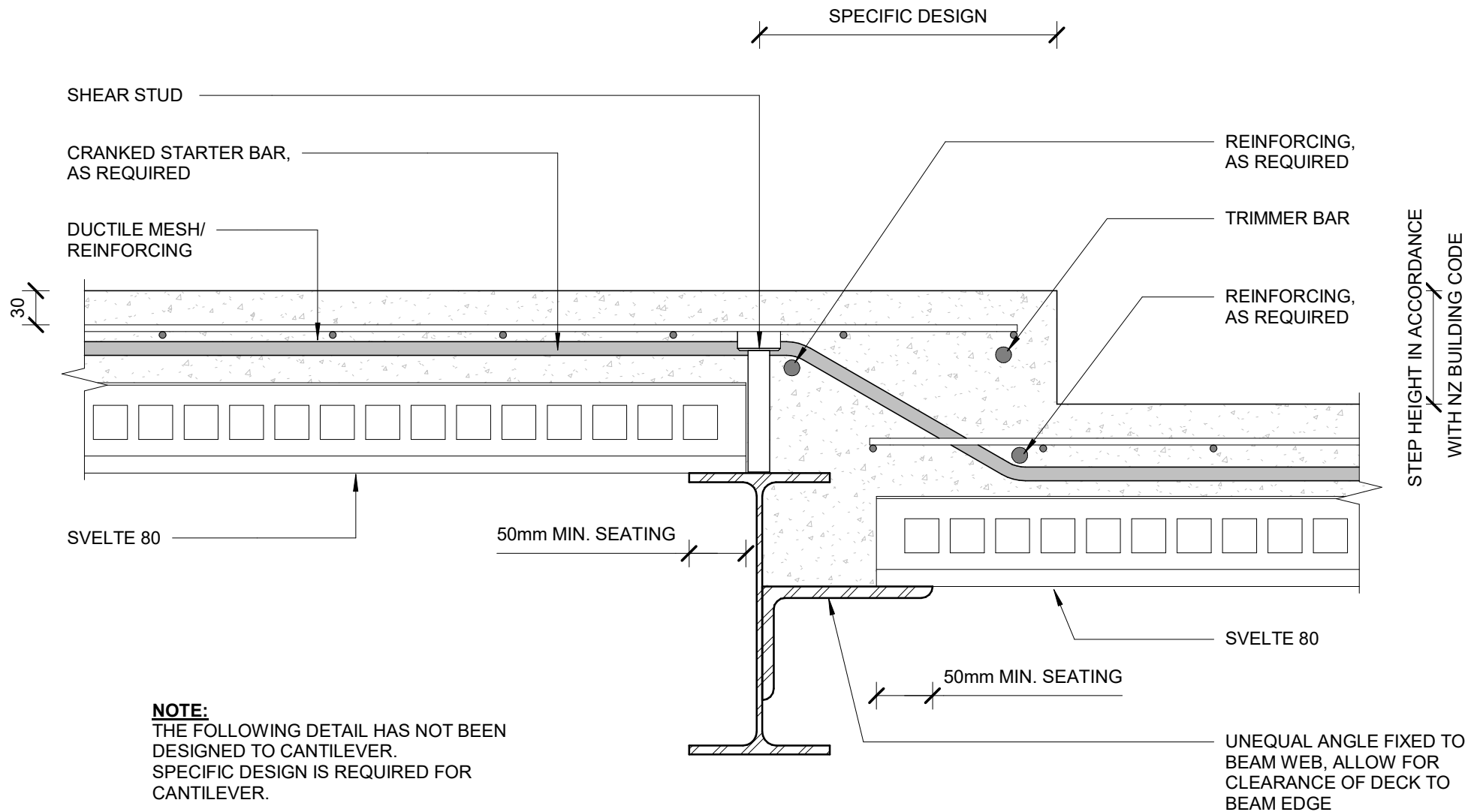




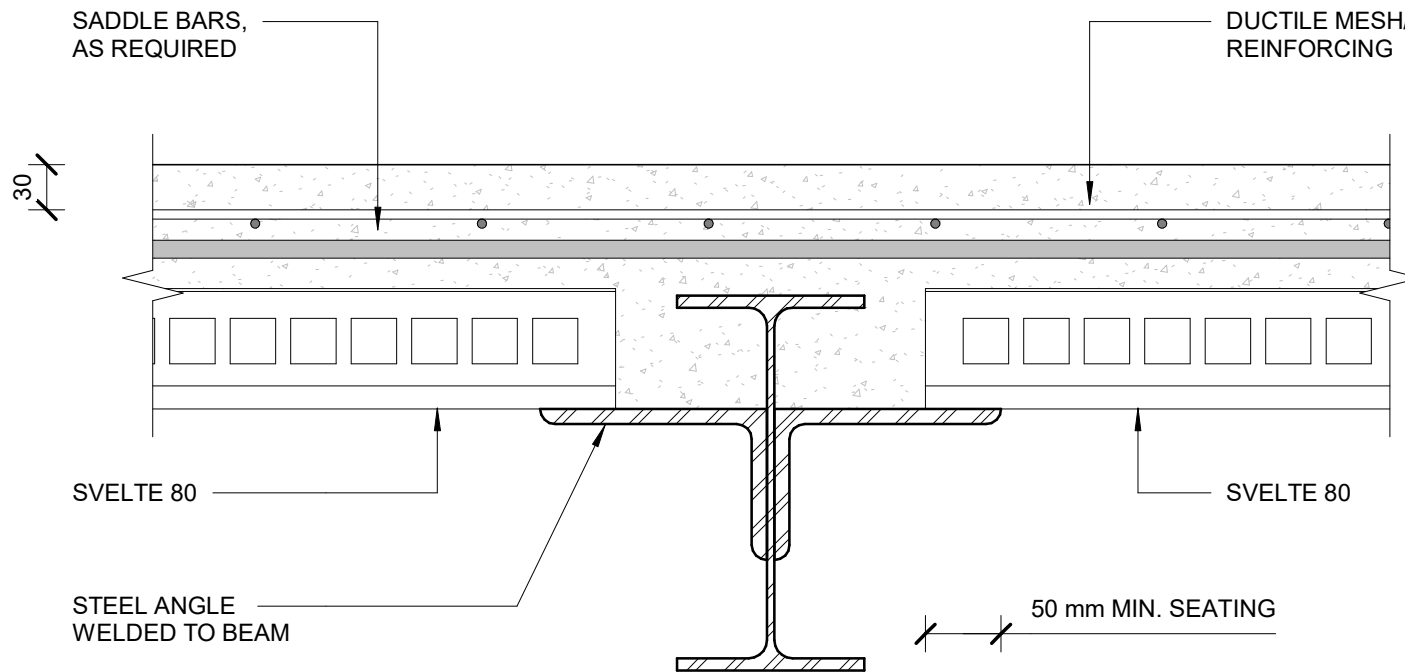
STEEL BEAM INTERNAL SUPPORT PERPENDICULAR TO TRAY SPAN



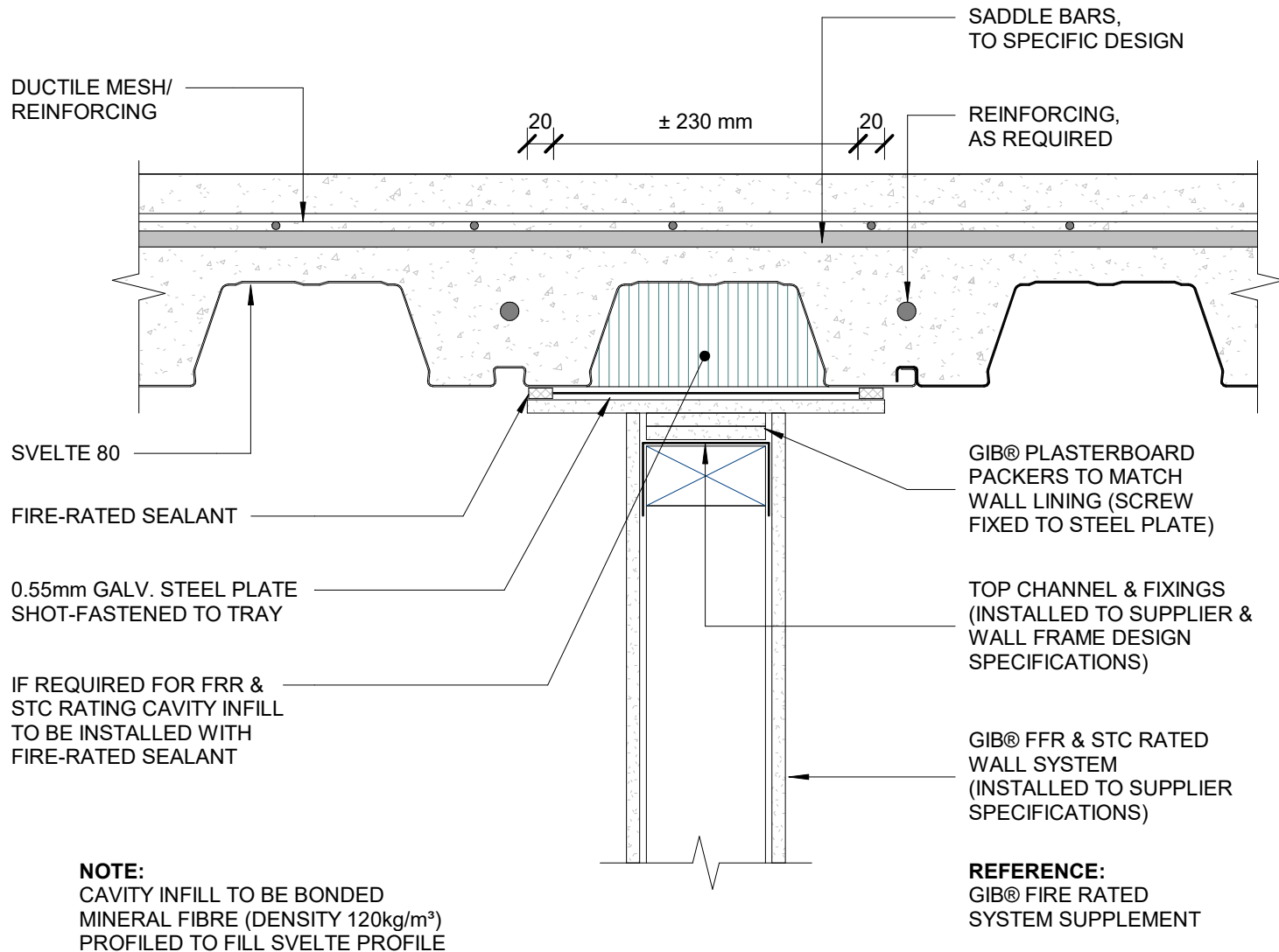
STEEL BEAM SUPPORT CONTINUOUS SPAN



STEP ON STEEL BEAM SUPPORT



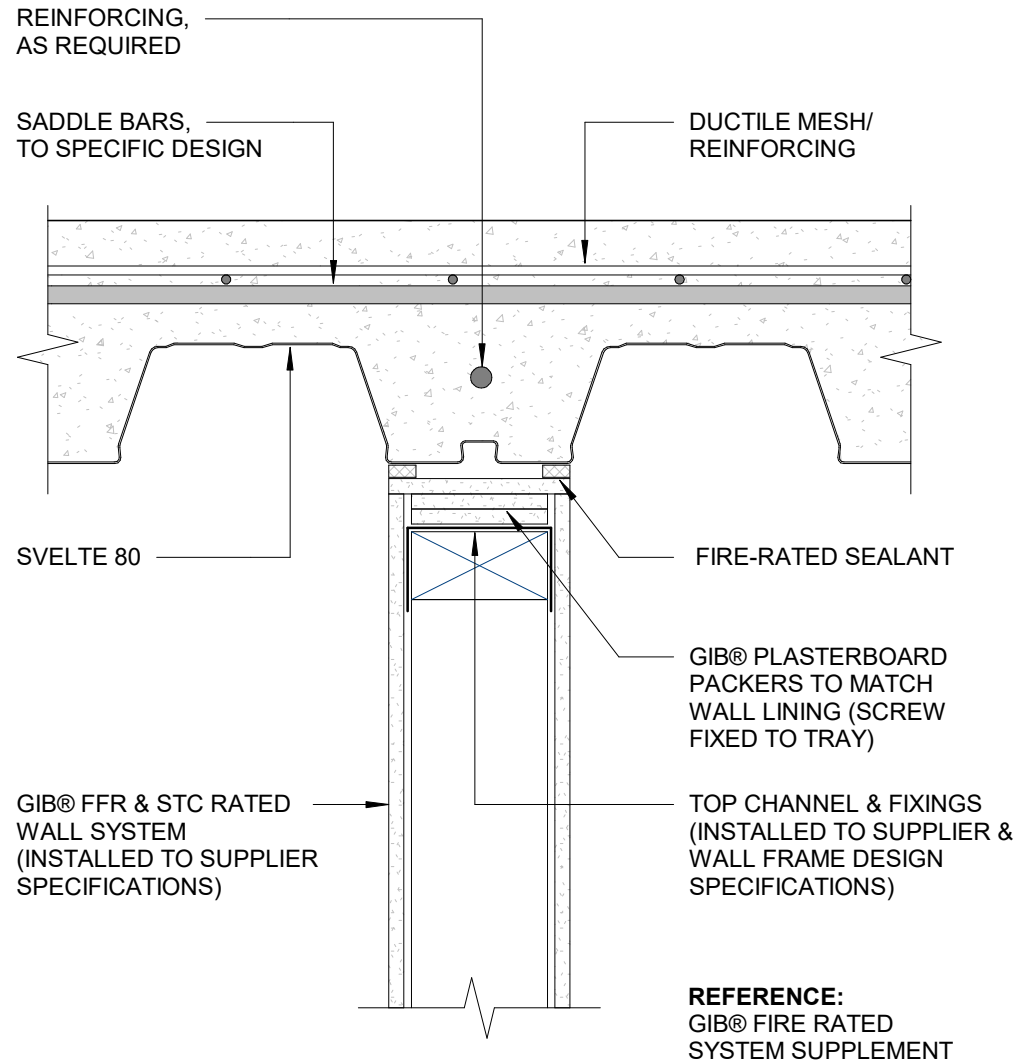
STEEL BEAM SUPPORT INTERNAL SET DOWN



**NOTE:**  
 CAVITY INFILL TO BE BONDED  
 MINERAL FIBRE (DENSITY 120kg/m<sup>3</sup>)  
 PROFILED TO FILL SVELTE PROFILE

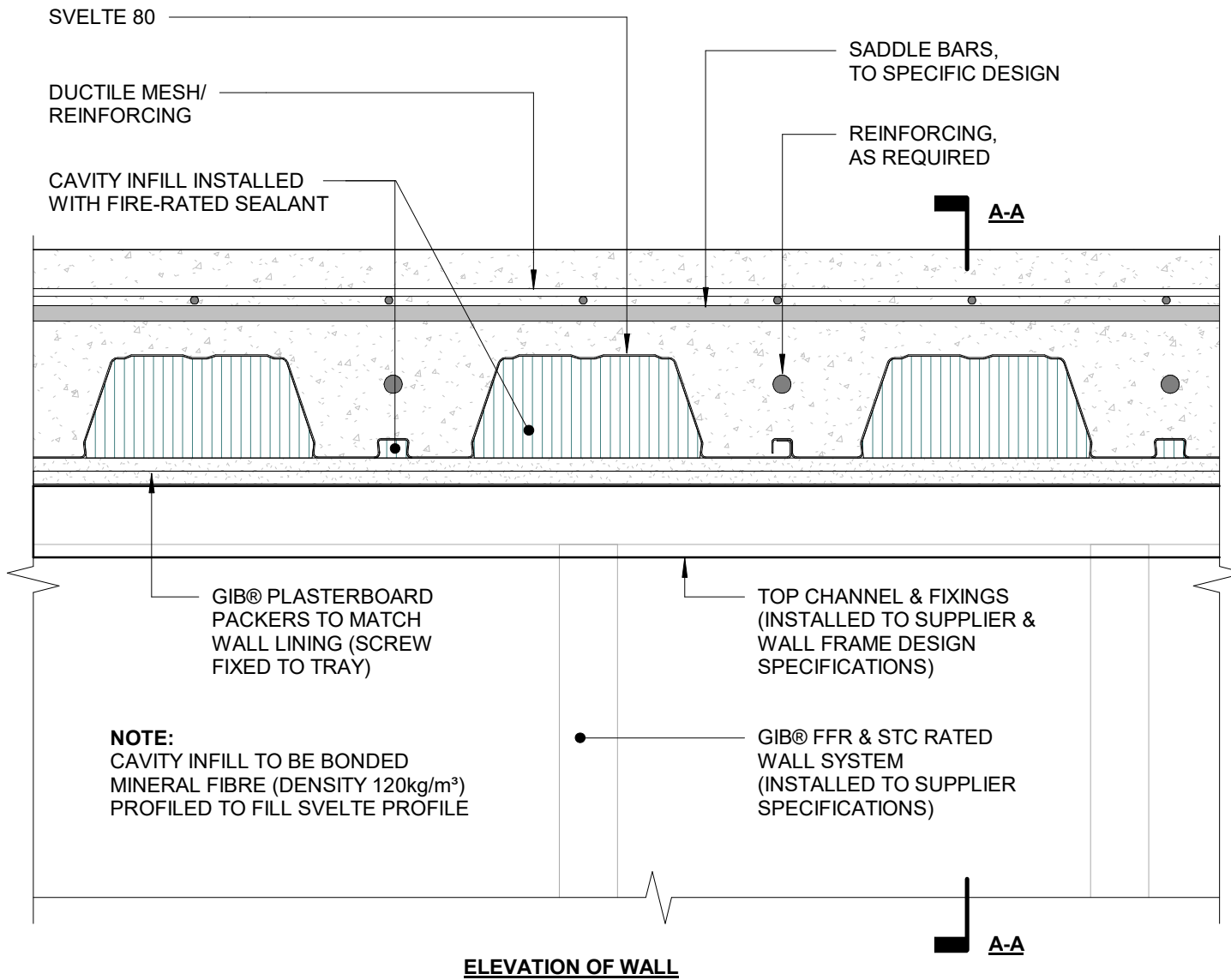
**OPTION 1**

**FFR & STC RATED GIB WALL SYSTEM PARALLEL TO TRAY (UNDERSIDE JOINT) - OPTION 1**

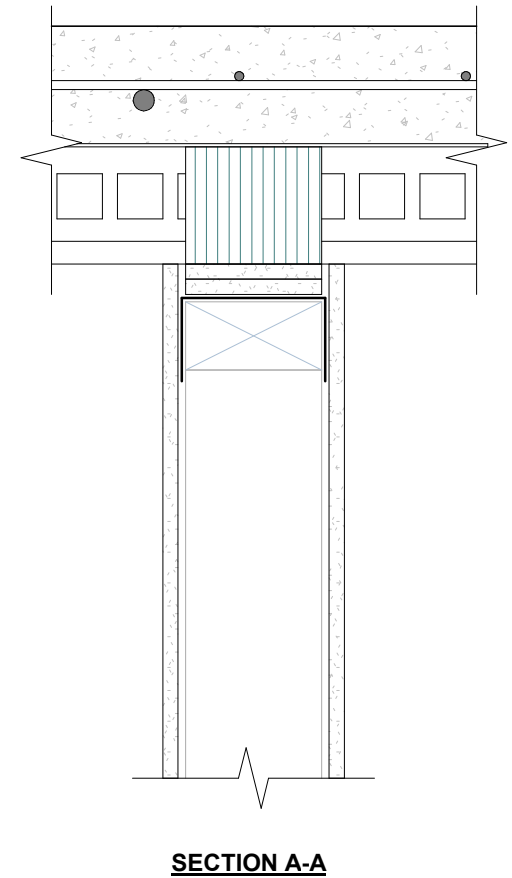


**OPTION 2**

**FFR & STC RATED GIB WALL SYSTEM PARALLEL TO TRAY (UNDERSIDE JOINT) - OPTION 2**



**REFERENCE:**  
GIB® FIRE RATED  
SYSTEM SUPPLEMENT



**FFR & STC RATED GIB WALL SYSTEM PERPENDICULAR TO TRAY (UNDERSIDE JOINT)**

**COMPOSITE STEEL  
FLOORING**

Rev. 1.0

**SVELTE 80**

Reference Designer

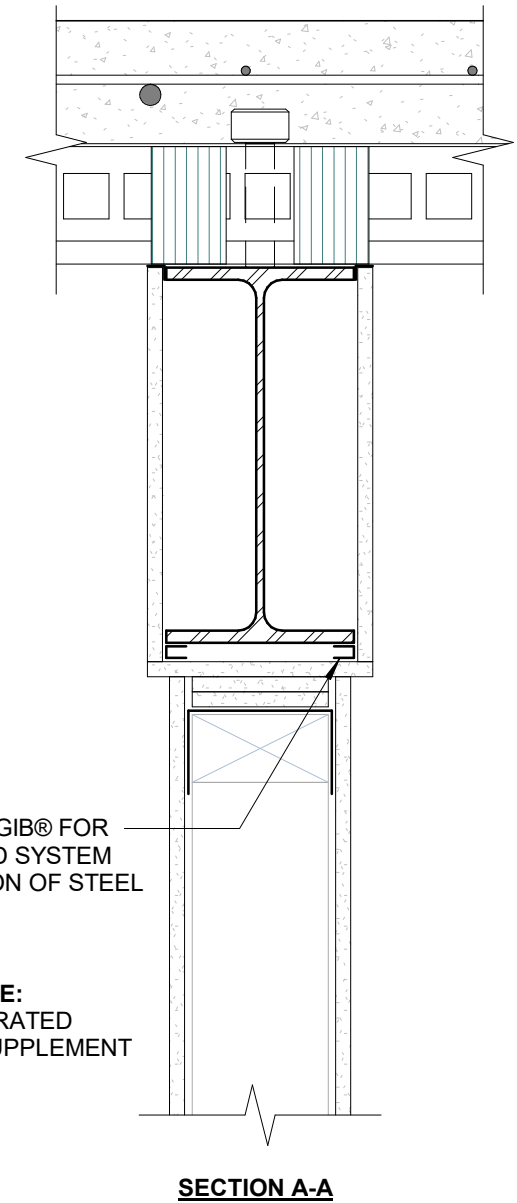
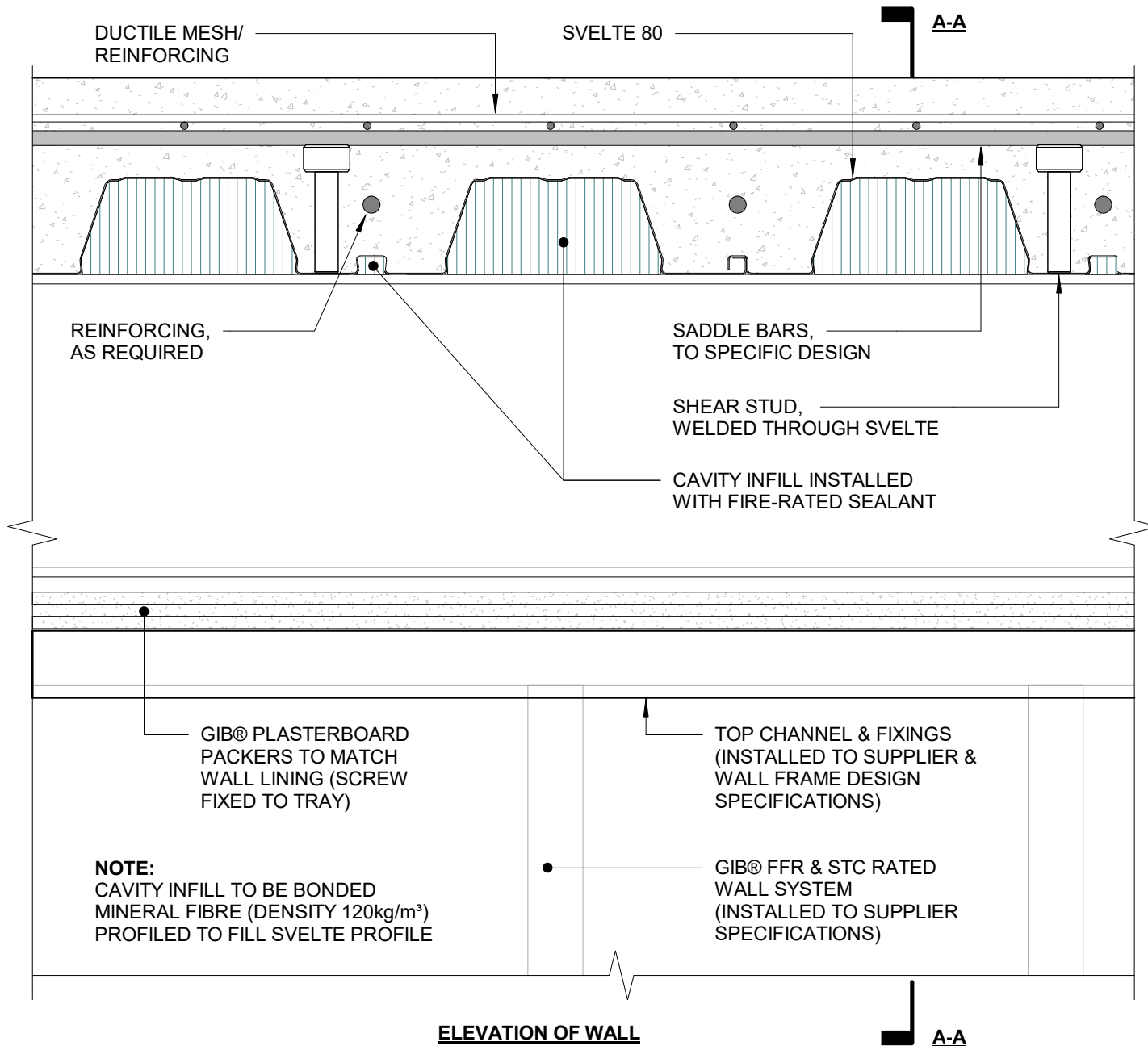
Date 20.07.2022

Scale 1 : 5

Sheet

**SV80/23**

**DISCLAIMER:**  
All details are to be used for indicative purposes only. The engineer should consult Metalcraft Composite Flooring- Steelspec Design Tool and the relevant AS/NZ Standards for the correct specification. Details and Compliance to NZBC regulations of the supporting mechanisms is the responsibility of the engineer.



FFR & STC RATED GIB WALL SYSTEM JOINT TO STEEL BEAM/ PERPENDICULAR TO TRAY

COMPOSITE STEEL  
FLOORING

Rev. 1.0

SVELTE 80

Reference Designer

Date 20.07.2022

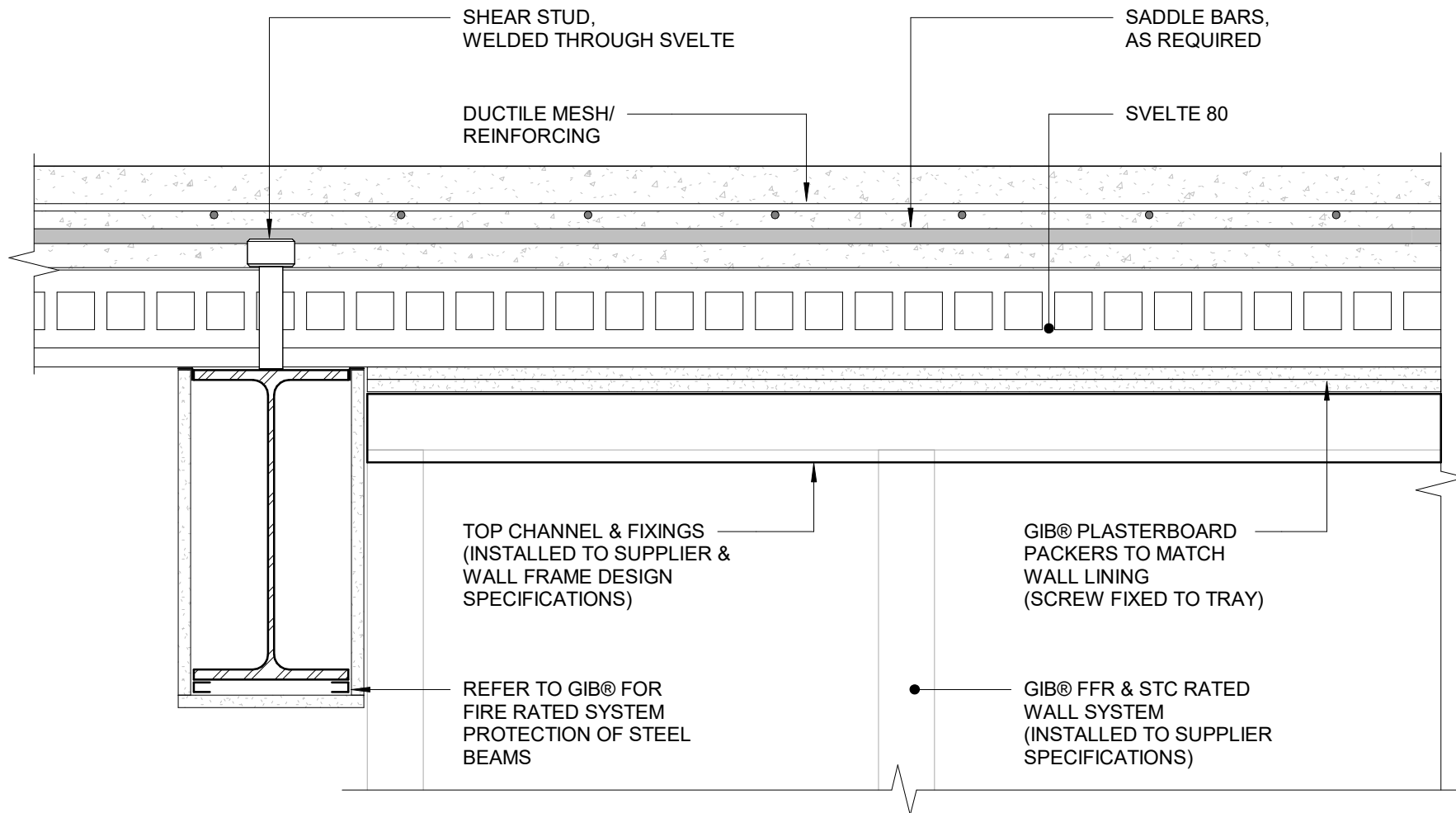
Scale 1 : 5

Sheet

SV80/24

DISCLAIMER:  
All details are to be used for indicative purposes only. The engineer should consult Metalcraft Composite  
Flooring- Steelspec Design Tool and the relevant AS/NZ Standards for the correct specification. Details  
and Compliance to NZBC regulations of the supporting mechanisms is the responsibility of the engineer.





**ELEVATION OF WALL**

**REFERENCE:**  
GIB® FIRE RATED  
SYSTEM SUPPLEMENT

**FFR & STC RATED GIB WALL SYSTEM JOINT TO STEEL BEAM/ PARALLEL TO TRAY**

**COMPOSITE STEEL  
FLOORING**

Rev. 1.0

**SVELTE 80**

Reference Designer

Date 20.07.2022

Scale 1 : 5

Sheet

**SV80/25**

**DISCLAIMER:**  
All details are to be used for indicative purposes only. The engineer should consult Metalcraft Composite Flooring- Steelspec Design Tool and the relevant AS/NZ Standards for the correct specification. Details and Compliance to NZBC regulations of the supporting mechanisms is the responsibility of the engineer.